

Musk Jinhe

佳乐麝香

佳乐麝香是一种常见日化香料，香味佳、稳定性好、留香持久，广泛用于皂用香精、洗涤剂用香精及其它日化香精配方中。常以苯甲酸苄酯、邻苯二甲酸二乙酯、十四酸异丙酯或二缩丙二醇等配成溶液使用。

Musk Jinhe is a polycyclic musk (PCM) with exceptional persistence and a superb fragrance, used as a fragrance ingredient in perfumes, soaps, cosmetics and detergents. The commercial product is diluted with solvents (e.g., diethyl phthalate, isopropyl myristate, benzyl benzoate) to make it less viscous.

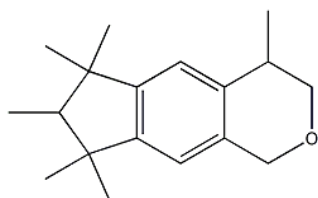
FEMA: 3626

熔点: 57-58°C

分子量: 258.4

分子式: C₁₈H₂₆O

分子结构:



产品包装

净重 200kg

质量标准

指标名称	佳乐原液	佳乐 50DEP	佳乐 50BB	佳乐 50IPM	佳乐 50DPG
色状	无色或微黄色粘稠液体	无色透明粘稠液体			
香气	麝香香气				
折光指数 (20°C)		1.518-1.528	1.538-1.548	1.488-1.498	1.498-1.504
相对密度 (25°C)		1.032-1.046	1.032-1.044	0.938-0.950	1.005-1.011
佳乐麝香含量% \geq	70	47.0			
稀释剂含量% \leq		40.0			

Name	Musk Jinhe	Musk in 50DEP	Musk in 50BB	Musk in 50IPM	Musk in 50DPG
Appearance	Colorless or little yellow viscous liquid	Colorless transparent viscous liquid			
Odor	Musk odor				
Refractive index (20°C)		1.518-1.528	1.538-1.548	1.488-1.498	1.498-1.504
Relative Density (25°C)		1.032-1.046	1.032-1.044	0.938-0.950	1.005-1.011
Content (Musk Jinhe) % \geq	70	47.0			
Content (diluent) % \leq		40.0			